

# **FLYING FIELD OPERATIONAL AND SAFETY RULES**

**DARE COUNTY RADIO CONTROL FLYERS  
ACADEMY OF MODEL AERONAUTICS CHAPTER 2691**



*At the Home of the First Flight – The Outer Banks of North Carolina*

# FLYING FIELD LAYOUT AND SIGNAGE

An image illustrating the club's flying field layout is displayed in Figure B-1, followed by a brief description of the indicated areas.

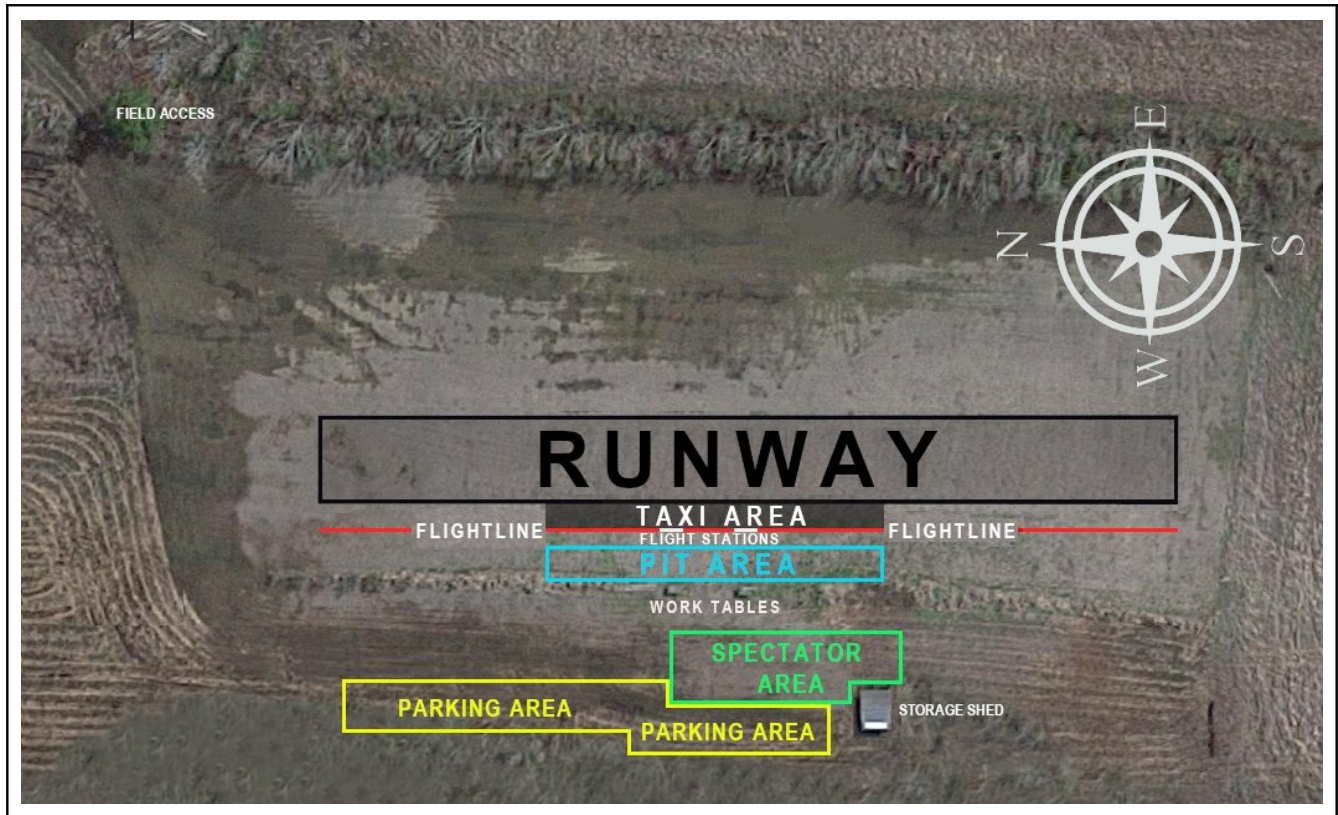


Figure B-1

**Field Access.** The opening in the treeline between the gun club skeet range and the flying field. Signage provided on a post at the entrance (Figure B-2) warns those entering the field to stop and watch for aircraft. A second sign on the post (Figure B-3) provides information on how to transit the field to the designated parking area.

**Flight Line.** The line formed by the two flight stations, running north to south and extended to the boundaries of the flying field.

**Flight Stations.** Two sections of white plastic fence in front of the Pit Area from which pilots fly their aircraft. Signage attached to the fencing (Figure B-4) warns of danger and advises to watch for moving aircraft due to the presence of an active runway beyond the fence.

**Parking Area.** The area on the western perimeter of the field in which members and guests may park their vehicles.

**Pit Area.** The area between the work tables and the flight line used to fuel and test aircraft motors and engines, and to perform a pre-flight check of the aircraft.

**Runway.** The grass area east and directly in front of the flight line and taxi area is the active runway.

**Spectator Area.** The area between the parking area and the work tables in which those not actively involved in flight operations or flight-support efforts must remain to observe activities at the field.

**Storage Shed.** The structure located near the western perimeter of the field that is used to store maintenance, operational, and safety equipment. Four signs are attached to the structure. These signs provide the field's address and emergency phone numbers (Figure B-5), the field's GPS coordinates and the elevation (Figure B-6), the location of the fire extinguisher (Figure B-7), and the location of first aid supplies (Figure B-8).

**Taxi Area.** The path from the flight line to the active runway.

**Work Tables.** Fixed wooden tables used to provide a surface to prepare model aircraft for flight. Signage suspended from the table frame advise that beyond this point, the area is restricted to pilots only (Figure B-9).



Figure B-2



Figure B-3



Figure B-4



Figure B-5

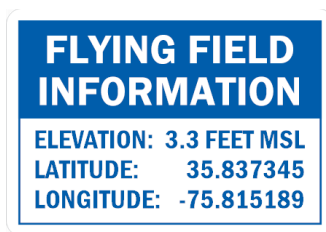


Figure B-6



Figure B-7



Figure B-8



Figure B-9

This document has been reviewed and approved by the club officers this 2nd day of March, 2023.

# FLYING FIELD OPERATIONAL RULES

**Flying Field Use:** Field use is limited to current club members and their guests. Members of other AMA-chartered clubs may use the field when invited and accompanied by a current club member, along with proof of valid Academy of Model Aeronautics (AMA) membership.

**Hours of Operation:** Flying field hours of operation are from 9:00AM to 5:00PM, unless further limited by Outer Banks Gun Club operations.

**Field Access and Parking:** When entering the field be watchful and yield to any aircraft observed. Proceed along the perimeter of the field and park only in the designated area on the western perimeter.

**Documents Required:** Pilots must have in their possession, a valid AMA membership card, a valid Federal Aviation Administration (FAA) small UAS certificate of registration, and a valid FAA recreational UAS safety test (TRUST) completion card. These documents must be presented for examination if requested by a club officer.

**Safe Operation of Aircraft:** All pilots must comply with the AMA's *National Model Aircraft Safety Code*, our club's flying field operational and safety rules, and all existing FAA regulations.

**Safety Equipment:** A commercial grade ABC-type fire extinguisher and a first aid kit is available in the club storage shed, adjacent to the spectator area.

**Emergency Phone Numbers:** Phone numbers to contact the gun club office and emergency response services are provided on signage located on the club's storage shed. This sign also provides the property's physical address and the field's GPS coordinates to assist emergency service responders.

**Aircraft Marking:** All aircraft must be marked with the owner's FAA UAS operator registration number on an outer surface of the aircraft.

**Aircraft Permitted:** The flying field is suitable for radio control, control-line, and free-flight aircraft operations. Only aircraft with a weight under 55 pounds and a speed under 100 miles per hour are permitted as the field is not satisfactory for impulse jet, gas turbines, or extremely large-scale aircraft.

**Radio Frequency Control:** Radio systems operating on the 2.4GHz band are preferred. Those not using 2.4GHz broad spectrum systems must inform the safety officer of the frequency they intend to use, and must check with all other fliers at the field prior to powering-on any transmitters or receivers to ensure that not more than one pilot is operating on the same frequency at the same time.

**Noise Abatement:** Internal combustion engines with a displacement of 0.10 cubic inches or greater must be equipped with an effective muffler.

**Restrictions:** The use of alcoholic beverages, drugs, and pyrotechnic devices are strictly prohibited.

**Guests and Spectators:** Members are responsible for the conduct of their family, friends, and guests. Parents are responsible for the conduct of children who are under the age of 18, and must provide direct supervision at all times. Spectators must remain in the designated parking and spectator area, and are only be permitted beyond the work tables when accompanied by a club member.

**Pets:** Pets must remain in the spectator or parking area and are not permitted to run free at anytime.

**Trash:** All trash generated must be removed and disposed in the gun club dumpster or offsite.

This document has been reviewed and approved by the club officers this 2nd day of March, 2023.

# FLYING FIELD SAFETY RULES

There shall be no flying while the airstrip is being mowed.
Storage shed doors shall be opened prior to flight operations to allow unhindered access to the fire extinguisher and first aid supplies.
Flight equipment must be inspected and radio checked before the initial flight each day.
Control surfaces must be inspected for correct surface movement prior to each flight.
Flight operations are allowed only from designated flight stations.
Flying over the gun club is prohibited (See following page).
Takeoffs, landings, and flying over the parking and spectator areas is prohibited (See following page).
On Sundays and Wednesdays, flying low or walking north of the access road is prohibited since the youth skeet range is in operation and this area is a projectile impact zone (See following page).
No more than three (3) persons are permitted at each flight station while flying.
Pilots and crew must remain behind the fence of their flight station.
Pilots and crew members must be free of the influence of alcohol and drugs.
Caution shall be exercised when starting engines and taxing out of flight stations for takeoff.
Takeoffs and landings should be made in the upwind direction.
Hand launching is permitted only from the airstrip.
Engine restarts are not permitted on the runway.
Pilots shall notify all others prior to takeoff, landing, or prior to stepping onto the runway to launch or recover aircraft.
Pilots will notify all others in the case of a dead stick or emergency situation.
Pilots must wait until the airstrip and pattern is clear before proceeding onto the runway.
Pilots must promptly clear the airstrip once the model is launched or recovered.
During a dead stick or an emergency condition, all persons should take immediate action to observe the situation and be prepared to take necessary action to avoid injury to themselves or others.
A landing aircraft has the right of way over any aircraft taking off.
A “dead stick” aircraft has the right of way over all others.
No more than four (4) models are permitted in the air at once under normal circumstances.
Low altitude high speed passes and all aerobatics may only be made over the airstrip at a minimum altitude of ten (10) feet and a minimum distance of thirty (30) feet east of the flight stations.
Aggressive maneuvers toward or at the flying stations, pit areas, or spectator areas are prohibited.
Transmitters not utilizing 2.4GHz must display frequency identification flags during large events.
The use of a spotter is required for all First-Person-View (FPV) flight operations.

This document has been reviewed and approved by the club officers this 2nd day of March, 2023.



# FLYING FIELD RESTRICTED AIRSPACE

Flight operations over the gun club and over the flying field's parking and spectator areas is strictly prohibited. The flying site area, including the Outer Banks Gun Club complex and the club's flying field, is illustrated below in Figure E-1, with these restricted areas outlined and shaded in red.

In addition, on Sundays and Wednesdays, flying low or walking north of the access road is prohibited since the youth skeet range is in operation and this area is a projectile impact zone. This area is outlined and shaded in yellow in Figure E-1, below.

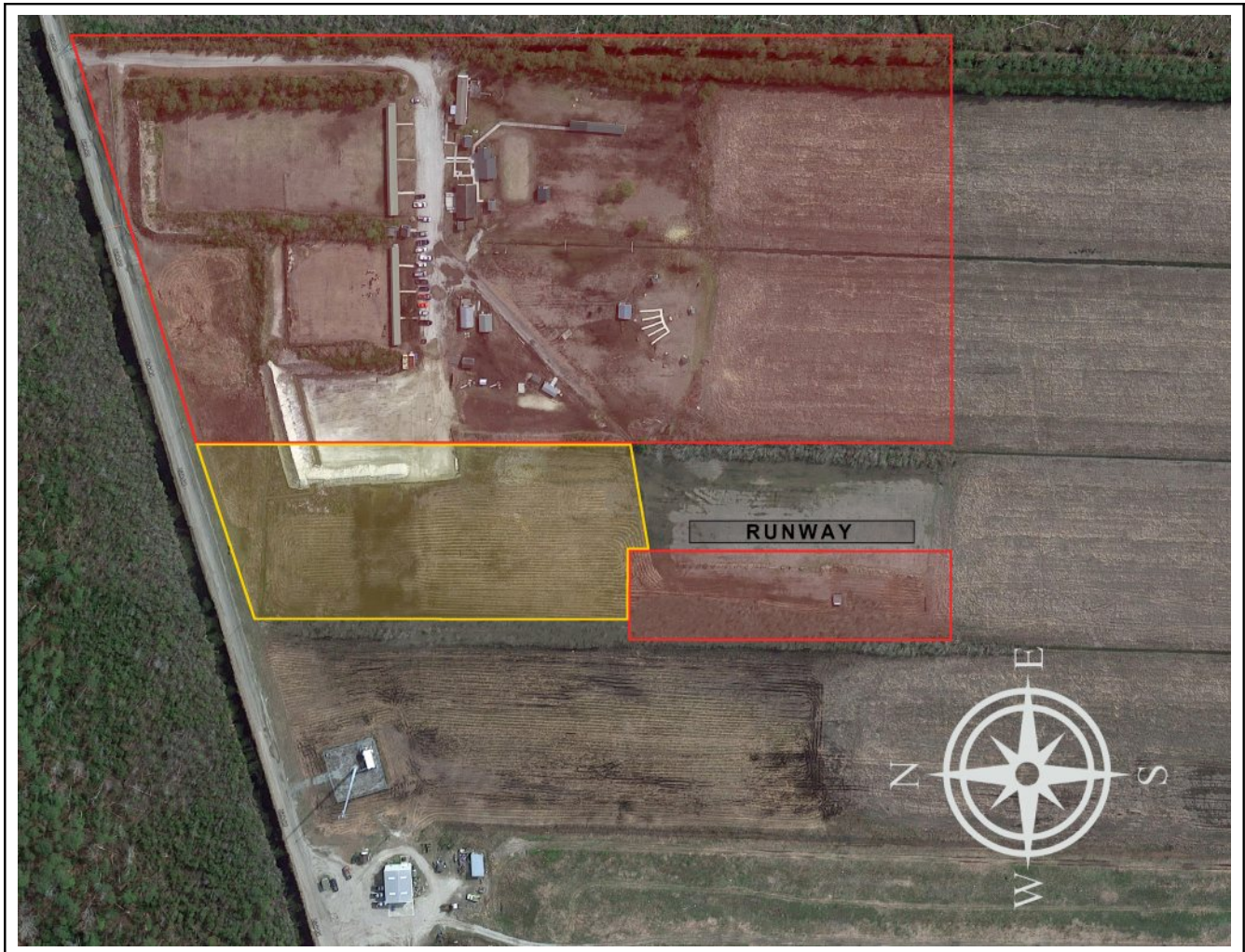


Figure E-1

This document has been reviewed and approved by the club officers this 2nd day of March, 2023.